

## JONCRYL<sup>®</sup> 9530-A

Waterborne Acrylic Dispersion for High-End Wood Applications

### Features

- Self-crosslinking
- High wet-film clarity and transparency
- Best-in-class in-can clarity
- Fine particle size for deep wood penetration

### Benefits

- Superior chemical resistance
- Excellent grain enhancement
- Exceptional warmth of wood
- High scratch resistance
- Good PUD blend partner
- Low VOC (140 g/L)



Part of the JONCRYL 953X Phoenix Platform for acrylic dispersions for wood coatings.

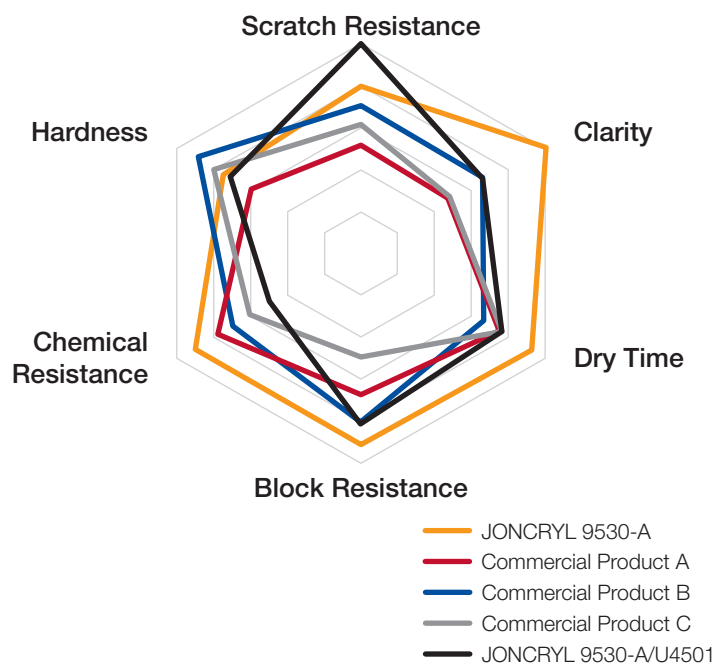
# JONCRYL 9530-A

## Waterborne Acrylic Dispersion for High-End Wood Applications

### Enhancing and protecting wood's natural beauty through clarity and superior chemical resistance.

JONCRYL 9530-A is a new universal self-crosslinking dispersion designed for use in wood topcoats and primers. The resin is characterized by its superior clarity and chemical resistance and is perfect for applications that require excellent wood grain enhancement and protection. Adhesion as a topcoat is improved by JONCRYL 9530-A's fine particle size, which allows for deeper penetration into the wood grain. JONCRYL 9530-A is a good blend partner with polyurethane dispersions, enabling formulators to achieve even greater performance for the toughest of customer requirements. When a project demands a resin that provides clarity and chemical resistance, look no further than JONCRYL 9530-A from BASF.

### Competitive Benchmarking: WB Acrylic Topcoats (outermost ring = top performance)



JONCRYL 9530-A is the top-performer for chemical resistance, in-can and wet-film clarity, block resistance, and dry time. Contact us for detailed test results.

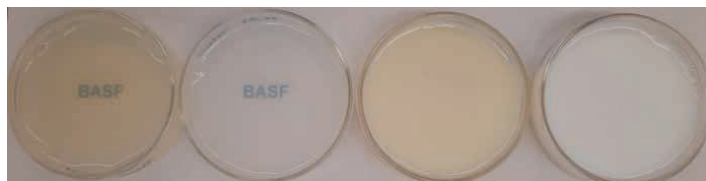
### Physical Properties

Appearance	Translucent emulsion
Solids content	Approx. 40%
Viscosity	<100 mPa·s
pH	Approx. 7.3
MFFT	45°C
Gloss (initial)	Similar

### Application Areas:

- Wood flooring
- Wood furniture
- Kitchen cabinets
- Exterior wood surfaces

### In-Can Clarity Comparison:



Competition\*    JONCRYL 9530-A    JONCRYL 541    JONCRYL 2981

\* Competitor Resin: self-crosslinking acrylic resin with small particle size

### Contacts

Please contact our technical service department for more help on formulating with products from the JONCRYL Line.

#### North America

USA  
Phone: +1 800 231-7868  
www.basf.us/dpsolutions

#### Europe, Africa, West Asia

The Netherlands  
Phone: +31 513 619-619  
resins@basf.com

#### Asia

China  
Phone: +852 2731-0111  
dispersions-pigments-asia@basf.com

#### South America

Brazil  
Phone: +55 11 2039-2300  
packaging-sa@basf.com

BASF SE, 67056 Ludwigshafen, Germany

The data contained in this publication are based on our current knowledge and experience. In view of the many factors that may affect processing and application of our product, these data do not relieve processors from carrying out their own investigations and tests; neither do these data imply any guarantee of certain properties, nor the suitability of the product for a specific purpose. Any descriptions, drawings, photographs, data, proportions, weights etc. given herein may change without prior information and do not constitute the agreed contractual quality of the product. The agreed contractual quality of the product results exclusively from the statements made in the product specification. It is the responsibility of the recipient of our products to ensure that any proprietary rights and existing laws and legislation are observed. When handling these products, advice and information given in the safety data sheet must be complied with. Further, protective and workplace hygiene measures adequate for handling chemicals must be observed. (01/2018)

© = Registered trademark of the BASF Group