

® = registered Trademark of BASF SE

Tinuvin[®] 770

Characterization

Tinuvin 770 is a low molecular weight hindered amine light stabilizer (HALS) for applications demanding particularly high light stability. It provides excellent light stability for thick sections but can also be used for articles with a high surface area such as films and tapes.

Chemical name

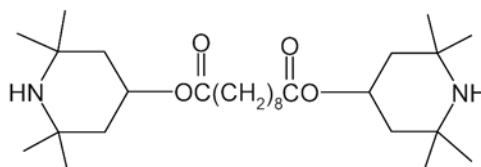
Bis(2,2,6,6,-tetramethyl-4-piperidyl)sebacate

CAS number

52829-07-9

Structure

Tinuvin 770



Molecular weight

481 g/mol

Applications

Tinuvin 770 is recommended to be used in polypropylene, impact modified PP (TPO), EPDM, polystyrene, impact polystyrene, ABS, SAN, ASA, polyurethanes, and is also effective in polyamides and polyacetals.

Features/benefits

Tinuvin 770 is a low molecular weight hindered amine light stabilizer that provides excellent light stability for thick sections and films in the recommended substrates. Benefit of using Tinuvin 770 is the high light-stabilizing performance, particularly in PP thick sections to protect the surface. It has broad compatibility and can be easily dispersed.

Compared to UV absorbers, the effectiveness of HALS, like Tinuvin 770, is not dependent on the polymer's thickness. For this reason the use of Tinuvin 770 also provides good light stability in articles with higher specific surface, e. g. films and tapes.

Product forms

Code: Tinuvin 770 DF
Appearance: white crystalline granules

Guidelines for use

The recommended concentrations range between 0.1 % and 1.0 %, depending on the substrate, processing conditions and application. The optimum level is substrate and application specific. Extensive performance data of Tinuvin 770 in various substrates and for various applications is available upon request.

Physical properties

Melting range:	81–85 °C
Flashpoint (DIN 51584):	> 150 °C
Specific gravity (20 °C):	1.05 g/cm ³
Vapor pressure (20 °C):	1.3 E-8 Pa
Bulk density:	470–510 g/l

Solubility (20 °C)	% w/w
Acetone	19
Chloroform	45
Ethanol	–
Ethyl acetate	24
n-Hexane	5
Methanol	38
Dichloromethane	56
Toluene	–
Water	<0.01

Volatility	Pure substance; TGA, heating rate at 20 °C/min in air
Weight Loss (%)	Temperature °C
0.7	150
0.7	175
1.0	200
2.1	225
7.2	250
19.8	275

Handling & Safety

In accordance with good industrial practice, handle with care and avoid unnecessary personal contact. Avoid continuous or repetitive breathing of dust. Use only with adequate ventilation. Avoid contact with eyes. Avoid release to the environment. Avoid dust formation and ignition sources.

For more detailed information please refer to the material safety data sheet.

Note

The descriptions, designs, data and information contained herein are presented in good faith, and are based on BASF's current knowledge and experience. They are provided for guidance only, and do not constitute the agreed contractual quality of the product or a part of BASF's terms and conditions of sale. Because many factors may affect processing or application/use of the product, BASF recommends that the reader carry out its own investigations and tests to determine the suitability of a product for its particular purpose prior to use. It is the responsibility of the recipient of product to ensure that any proprietary rights and existing laws and legislation are observed. No warranties of any kind, either expressed or implied, including, but not limited to, warranties of merchantability or fitness for a particular purpose, are made regarding products described or designs, data or information set forth herein, or that the products, descriptions, designs, data or information may be used without infringing the intellectual property rights of others. Any descriptions, designs, data and information given in this publication may change without prior information. The descriptions, designs, data and information furnished by BASF hereunder are given gratis and BASF assumes no obligation or liability for the descriptions, designs, data or information given or results obtained, all such being given and accepted at the reader's risk.

May 2011